

## Features & Options

- Etched Teflons Leads on Remote Sensors
- Plenum Cable or FEP Cable on Remote Probes
- Double Encapsulated Sensors on Remote Probes

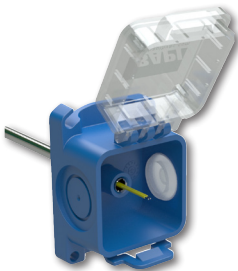
BAPI Remote Sensors feature a .75" long encapsulation shell and etched Teflon leads in lengths of 6", 18", 5', 10', 15', 20', and 25'. Remote Sensors are perfect for tight locations. Additional cable options, lead lengths and probe styles are available.

Remote Probes feature a 1.75" long stainless steel probe with either Plenum-Rated Cable or FEPJacketed Cable. Lead lengths are 18", 5', 10', 15', 20', and 25'. Remote Probes are commonly used in refrigerated case or strap-on applications. They are ideal for hard-to-access areas or spaces where the usual Immersion or Duct Sensors do not fit well. Additional cable options, lead lengths and probe styles are available upon request.

Remote Sensors and Probes are available with a new BAPI-Box Crossover enclosure or the BAPI-Box 2 enclosure .

### The BAPI-Box Crossover

The new BAPI-Box Crossover enclosure features a hinged cover with thumb latch for easy termination. A pierceable knockout plug is available for the open port. See the Accessories section for more info.



*(Shown with knockout plug sold separately.)*

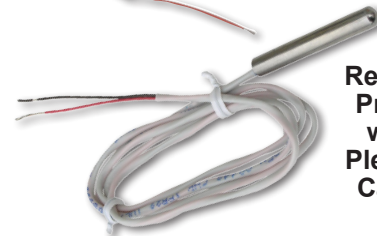
Remote Sensor with Epoxy Shell



Remote Probe with FEP Cable



Remote Probe with Plenum Cable



BAPI-Box 2 (BB2)



BAPI-Box Crossover (BBX)

## Specifications

### Environmental Operation Range:

Temperature Sensor: -40 to 105 °C  
 Temperature Transmitter: -20 to 70 °C  
 Humidity: 0 to 100%, non-condensing

### Probe Material:

Round Probe: Stainless Steel

### Enclosure Material:

UV-resistant polycarb., UL94, V-0

### Sensing Element:

Thermistor or RTD

(See Sensors Section for Specs.)

### BAPI-Box Crossover Enclosure Rating:

IP10, NEMA 1 (IP44 with knockout plug in open port)

### BAPI-Box 2 Enclosure Rating:

IP66, NEMA 4X

### Encl. Dimensions: H x W x D

BAPI-Box Crossover: 3.1 x 2.2 x 1.9" (79 x 56 x 49mm)  
 BAPI-Box 2: .....4.9 x 2.8 x 2.4" (125 x 72 x 60mm)

*(For enclosure dimension drawings, turn to the end of the section.)*

Use the Option Selection Guide below to create your custom part number. Replace the number and parenthesis with the designator for each selection. Skip the designator and dashes for optional selections that are not required in your configuration.



### Remote Sensors and Probes Option Selection Guide:

BA/ ( #1 ) - ( #2 ) - ( #3 )

#### #1: Temperature Sensor (required)

1K[375] ..... 1K Platinum RTD (375 curve)  
 1K[NI] ..... 1K Ω Nickel RTD  
 1K ..... 1K Platinum RTD (385 curve)  
 1.8K ..... 1.8K Thermistor  
 3K ..... 3K Thermistor  
 10K-2 ..... 10K-2 Thermistor  
 10K-3 ..... 10K-3 Thermistor  
 10K-3[11K] ..... 10K-3[11K] Thermistor  
 20K ..... 20K Thermistor

1K Plat. RTD Transmitters below with 4 to 20 mA Output - BAPI-Box 2 Enclosure required.

T1K[32 TO 212F] ..... 32 to 212°F Range  
 T1K[20 TO 120F] ..... 20 to 120°F Range  
 T1K[0 TO 100F] ..... 0 to 100°F Range

T1K[0 TO 100C] ..... 0 to 100°C Range  
 T1K[-7 TO 49C] ..... -7 to 49°C Range  
 T1K[-18 TO 38C] ..... -18 to 38°C Range

*Matched Transmitters are also available. Contact your BAPI representative for ordering.*

#### #2: Probe and Cable Options (required)

##### REMOTE SENSOR, ETCHED TEFLON LEADS

PP-6" ..... Remote Sensor, 6" Leads

##### REMOTE SENSOR, PLENUM-RATED CABLE

PP-18" ..... Remote Sensor, 18" Leads  
 PP-5' ..... Remote Sensor, 5' Leads  
 PP-10' ..... Remote Sensor, 10' Leads  
 PP-15' ..... Remote Sensor, 15' Leads  
 PP-20' ..... Remote Sensor, 20' Leads  
 PP-25' ..... Remote Sensor, 25' Leads

*Additional options are available for these units but not shown in this Selection Guide. Contact your BAPI representative for the complete list of options. Submittal sheets without List Prices can be downloaded from our website at [www.bapihvac.com](http://www.bapihvac.com)*

##### REMOTE PROBE, PLENUM-RATED CABLE

RPP-6" ..... Remote Probe, 6" Leads  
 RPP-18" ..... Remote Probe, 18" Leads  
 RPP-5' ..... Remote Probe, 5' Leads  
 RPP-10' ..... Remote Probe, 10' Leads  
 RPP-15' ..... Remote Probe, 15' Leads  
 RPP-20' ..... Remote Probe, 20' Leads  
 RPP-25' ..... Remote Probe, 25' Leads

##### REMOTE PROBE, FEP-JACKETED CABLE

RPFEP-6" ..... Remote Probe, 6" Leads  
 RPFEP-18" ..... Remote Probe, 18" Leads  
 RPFEP-5' ..... Remote Probe, 5' Leads  
 RPFEP-10' ..... Remote Probe, 10' Leads  
 RPFEP-15' ..... Remote Probe, 15' Leads  
 RPFEP-20' ..... Remote Probe, 20' Leads  
 RPFEP-25' ..... Remote Probe, 25' Leads

##### REMOTE PROBE, FEP-JACKETED CABLE SUITABLE FOR SUBMERSION

RPFEP2-6" ..... Remote Probe, 6" Leads  
 RPFEP2-18" ..... Remote Probe, 18" Leads  
 RPFEP2-5' ..... Remote Probe, 5' Leads  
 RPFEP2-10' ..... Remote Probe, 10' Leads  
 RPFEP2-15' ..... Remote Probe, 15' Leads  
 RPFEP2-20' ..... Remote Probe, 20' Leads  
 RPFEP2-25' ..... Remote Probe, 25' Leads

#### #3: Enclosure

(optional, BB2 required for units with transmitter)  
 BBX ..... BAPI-Box Crossover (IP10)  
 BB2 ..... BAPI-Box 2 (IP66, NEMA 4X)

**Example Number:** BA/ ( **10K-2** ) - ( **RPP-18"** ) - ( **BBX** )

**Actual Number (with parenthesis removed):** BA/10K-2-RPP-18"-BBX

**Description:** 10K-2 Thermistor, Outside Air Temperature Sensor, Remote Probe with Plenum Rated Cable, 18" Cable Leads, BAPI-Box Crossover Enclosure.

**Your Number:** BA/